

# Operation manul of combination machine

## Change Spindle



Tips: Please carefully read the operation after installation, pay attention to wear protective gloves.

1- Prepare these tools.



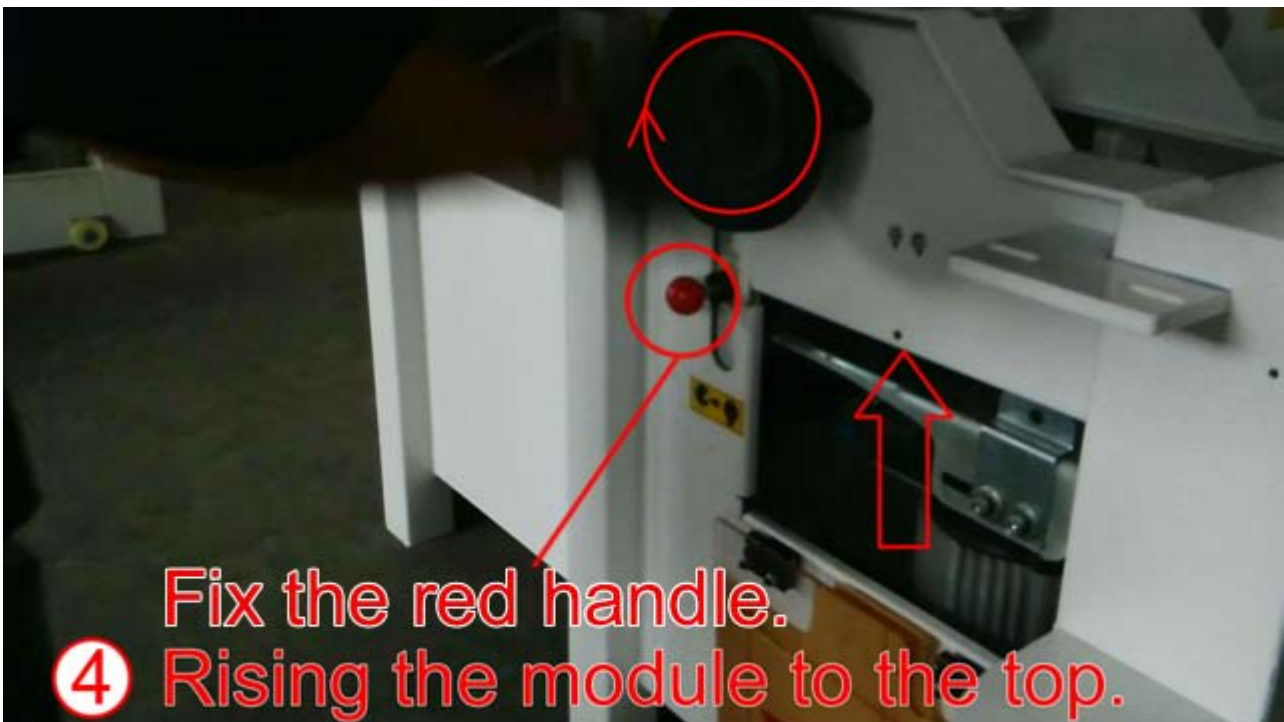
2- Unfix the red handle.



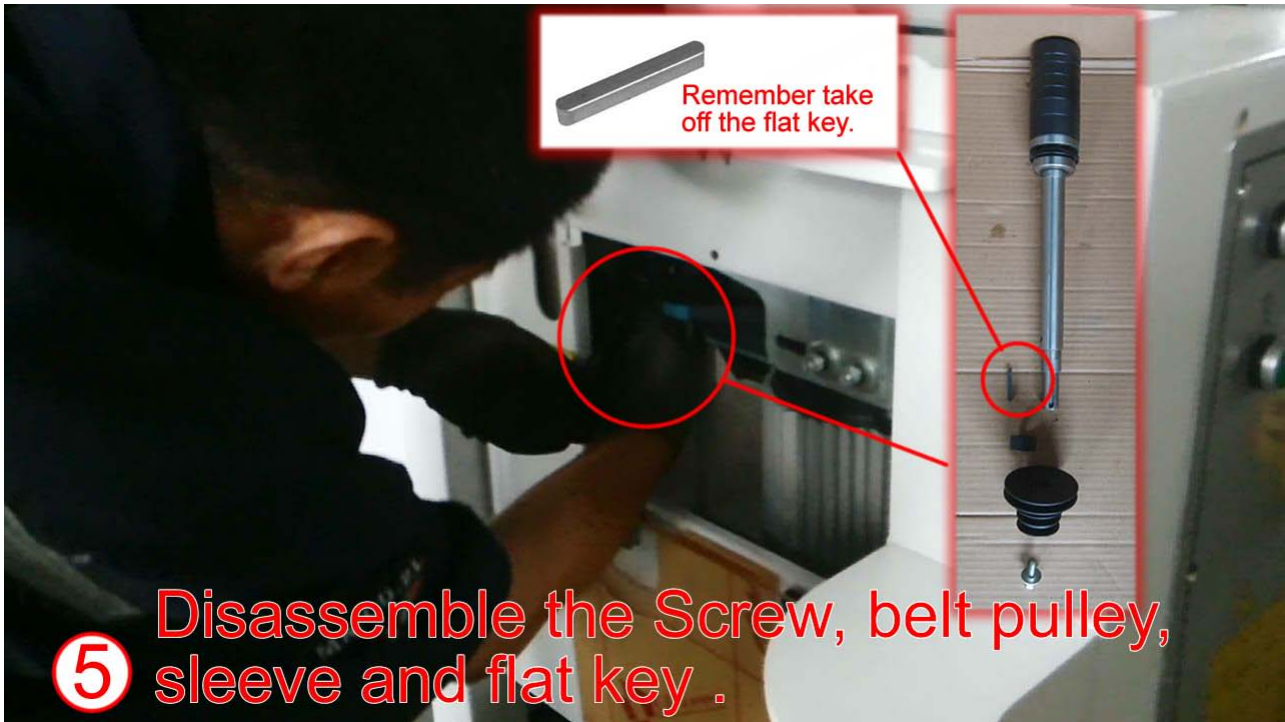
3- Lossen the two screws, move the motor to the left. And take off the belt.



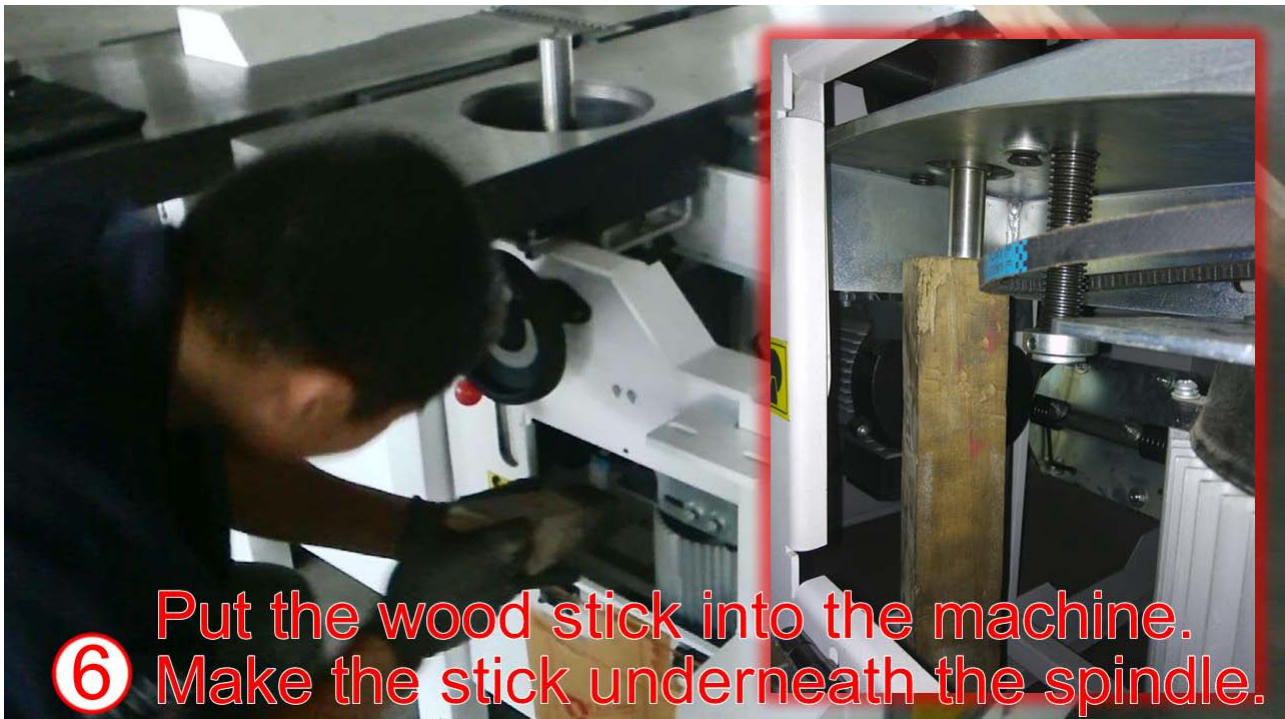
4- Fix the red handle. Rising the module to the top.



5- Disassemble the Screw, belt pulley, sleeve and flat key .



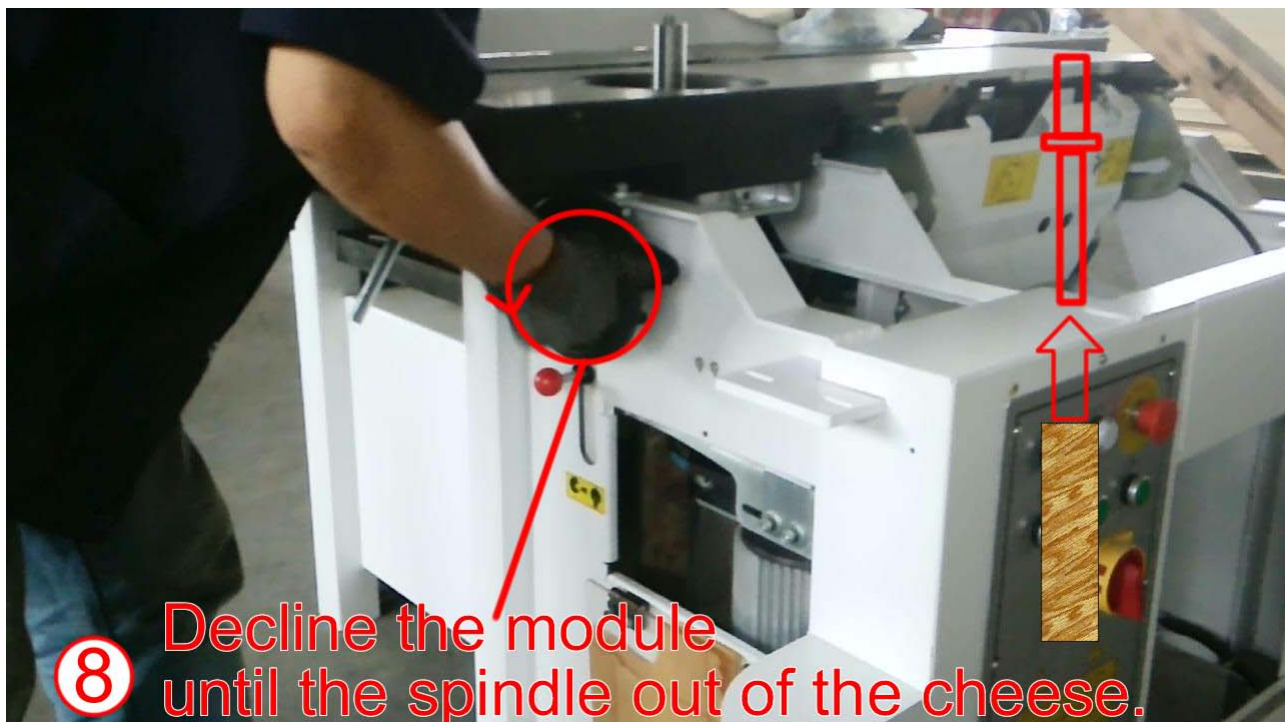
6- Put the wood stick into the machine. Make the stick underneath the spindle.



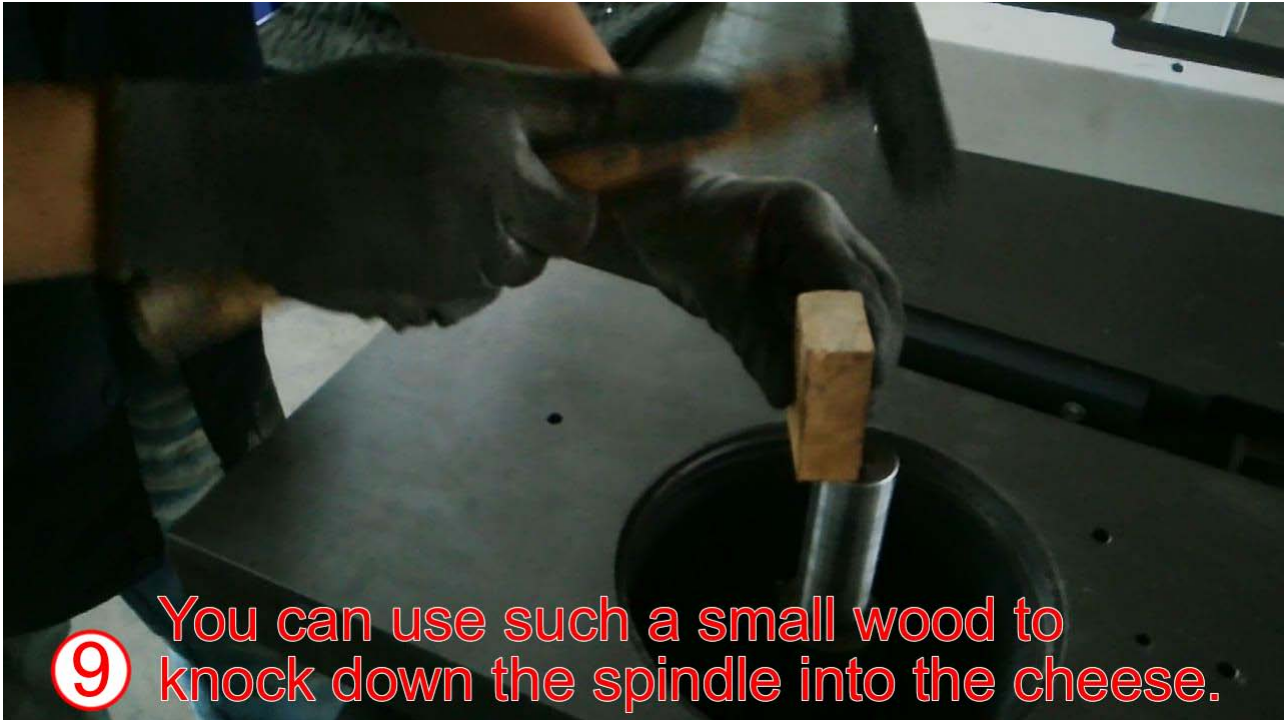
7- Unfix the red handle.



8- Decline the module until the spindle out of the cheese.



9- Assembly the new spindle: Reverse the operation.



⑨ You can use such a small wood to knock down the spindle into the cheese.